

BRITISH VIRGIN ISLANDS BORDERS REOPENING

New Travel Requirements For Fully Vaccinated Visitors May 15th, 2021

PROTOCOL REQUIREMENTS

BVI Gateway

<https://bvigateway.bviaa.com/>

Please visit for more information

<https://bvi.gov.vg/covid-19>

<https://www.facebook.com/BVIGovernment>

The BVI Government has relaxed protocols for vaccinated travelers by completely waiving the requirement for a 4th day test.

Effective May 15th, 2021, fully vaccinated persons travelling from overseas would require a PCR test within five (5) days of travel, provide satisfactory evidence of being fully vaccinated, and will be subject to a PCR test upon arrival (day zero). Fully vaccinated persons will be quarantined until a negative test result is received from the BVI Health Services Authority (typically between 24-48 hours. Once the test administered on arrival returns a negative, the fully vaccinated traveler will be immediately released from quarantine (unless they have been in close contact with a positive case).

Effective May 15th, 2021, fully vaccinated persons who have been present in the Virgin Islands for a period of more than fourteen (14) consecutive days and travel to the USVI, St. Martin, or Puerto Rico for a period not longer than 24 hours are exempted from quarantine and the COVID-19 test upon re-entering the Territory.

Day-trippers to these neighbouring jurisdictions would be required to take a PCR test seven (7) days after returning to the Territory.

Call or email us with any questions or inquiries.

(284) 542-5544 / (284) 542-5546

info@virgingordavillage.com

BRITISH VIRGIN ISLANDS BORDERS REOPENING

BVI Seaports Reopening Update April 15th, 2021

PROTOCOL REQUIREMENTS

BVI Gateway

<https://bvigateway.bviaa.com/>

Please visit for more information

<https://bvi.gov.vg/covid-19>

<https://www.facebook.com/BVIGovernment>

The 3 ferries that will operate from Road Town Jetty for transportation of international passengers from tomorrow have shared the following pricing information:

Smith's Ferry (Departs Monday's & Thursday's)

Adult (12+) \$60.00

Child (3-11) \$50.00

Infant (0-2) \$20.00

Seniors (65+) Adult rate

Road Town Fast Ferry (Departs on Tuesday's & Saturday's)

Adult (12+) \$60.00

Child (3-11) \$50.00

Infant (0-2) \$20.00

Seniors (65+) \$50.00

Native Son Ferry (Departs on Wednesday's & Friday's)

Adult (12+) \$60.00

Child (3-11) \$50.00

Child (1-4) \$30.00

Infant (0-2) \$15.00

Seniors (65+) \$50.00

Port Fees, Security fees and Departure taxes are not included in the cost of the ferry tickets. The Prices listed are for One Way Tickets

BRITISH VIRGIN ISLANDS BORDERS REOPENING

BVI Seaports Reopening Update April 15th, 2021

PROTOCOL REQUIREMENTS

BVI Gateway

<https://bvigateway.bviaa.com/>

Please visit for more information

<https://bvi.gov.vg/covid-19>

<https://www.facebook.com/BVIGovernment>

From **April 25th** public funding of marine and taxi transportation for arriving passengers to the sister islands will be discontinued.

Please go to **www.bvitourism.com/reopening** to get the most updated list of Gold Seal Marine Transportation Providers.

International Ferry Passenger Service

Process to Enter the British Virgin Islands

via SEAPORT during COVID-19

1

Before You Travel

Keep informed

www.bvitourism.com/reopening
www.bviports.org/covid-19



Travelers must begin their BVI Gateway application no later than **48 hours** before travel.
bvi.gateway.bviaa.com



Travelers must book their ferry tickets in advance.

2

Arrival Process at Ferry Terminal

Provide necessary documents to authorities

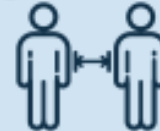


Receive your geo-fencing device



Take a Covid-19 RT-PCR test

Maintain physical distancing where possible.



Wear a mask!

GO directly to your place of quarantine with a certified transportation provider. You are responsible for the transportation fee.



3

Quarantine

You will be contacted for your day zero test results. For any questions on this, please call **(284) 852-7650** or email: covidrrt@bvihsa.vg
If you have any questions for your day four testing, please call: **(284) 468-2274**



REVISED

Updated 22 March 2021

KEY THINGS TO KNOW: FERRY EDITION

TRAVELLING TO THE BRITISH VIRGIN ISLANDS FROM THE US VIRGIN ISLANDS



Passengers are required to sanitize hands, wear a mask and maintain the recommended six (6) feet apart for social distancing prior to boarding and while on board the ferry.



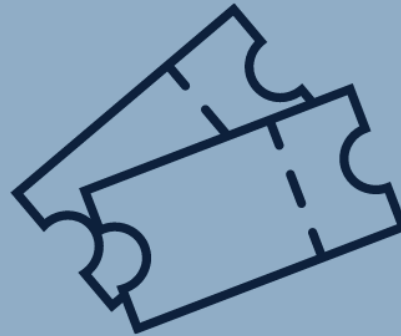
RESERVE TICKET

Prior to arrival at the ferry counter, passengers must make reservations with the ferry operators' booking portals.

www.nativesonferry.com

www.roadtownfastferry.com

www.smithsferry.com



TEMPERATURE CHECK

Upon arrival at the ferry operator's counter, passengers will be required to have their temperatures checked.

CHECK-IN

The following documents are required for each passenger at the ferry operator's check-in counter:

- Passport
- BVI Gateway Travel Authorisation Certificate (bvigateway.bviaa.com)
- A copy of negative COVID-19 test result



BOARDING FERRY



Passengers will be allowed one (1) carry-on/personal bag/briefcase. All luggage on wheels must be checked at the ferry counter. Seats on board the ferry will be marked to ensure appropriate

KEY THINGS TO KNOW: DEPARTURES FROM THE BRITISH VIRGIN ISLANDS ROAD TOWN JETTY TO THE US VIRGIN ISLANDS



Please wear a face mask and maintain social distancing while at our facility.

STEP 1: FERRY CHECK-IN

1. All passengers, five (5) years or older that are travelling to the US Virgin Islands are required to receive certification from usvitravelportal.com prior to arrival.
2. Passengers are required to make a reservation via the ferry operators' booking portal.
3. Please arrive at the Ferry Terminal to check-in at least one (1) hour before departure time with required documents. (passport, USVI travel certification)
4. Check-in will close twenty (20) minutes before scheduled departure time.



Please note: Passengers will only be allowed one (1) small carry-on/personal bag/briefcase. All wheeled luggage will have to be checked at the counter.

STEP 2: DEPARTURE TAX



All passengers departing the BVI are required to pay departure tax, with the exception of children under five (5).
Documents required: ferry ticket and proof of age and status.
\$15 for residents \$20 for visitors

STEP 3: SECURITY

Please have departure tax receipt ready to present to the security officer for entry into the departure lounge.



STEP 4: DEPARTURE LOUNGE

There is an interior and exterior departure lounge, available for passengers' comfort. Seats will be marked to ensure appropriate physical distancing.



STEP 5: BOARD FERRY

Passengers will be alerted when the vessel is ready for boarding and have ferry tickets available to present to the representative for the ferry .



KEY THINGS TO KNOW:
ARRIVALS

INTO THE BRITISH VIRGIN ISLANDS
ROAD TOWN JETTY
FROM THE US VIRGIN ISLANDS



Please wear a face mask and maintain social distancing while at our facility.

**STEP 1:
DISEMBARK FERRY**

Priority passengers will be allowed to disembark first; elderly (over 65), pregnant women, families with infants/toddlers, people with disabilities, members of the House of Assembly and visiting delegates.



Upon disembarkation passengers will be required to sanitise hands and have their temperature checked.



**STEP 2:
ARRIVAL LOUNGE**



Passengers will be directed to the arrival lounge until prompted by a BVI Ports Authority team member to proceed to the check-in station.

**STEP 3:
CHECK-IN**

Passengers will be required to provide valid identification to the health officer at the check-in station. After verification, passengers will receive a COVID-19 test kit.



**STEP 4:
TESTING STATION**

All arriving passengers will be required to take the Day-0 COVID-19 RT-PCR test

**STEP 5:
GEO-FENCING DEVICE**

Prior to heading to Immigration and Customs, please stop to receive the geo-fencing device(s). A photo will be taken here for identification purposes.



**STEP 6:
IMMIGRATION & CUSTOMS**



- Passengers need to have required documents (passport, travel authorisation and negative PCR test result) readily available for the Immigration Officers.
- Please collect bags and proceed to Customs. Passengers may be subject to bag screening.
- **Visitors must pay the \$10 Environmental and Tourism Levy in cash before exiting HM Customs.**
- **Passengers maybe required to pay Import Duty.**

**STEP 7:
GROUND TRANSPORTATION**

- A dispatcher will be located outside of the facility to direct passengers to their designated Government approved transportation provider.
- Please sanitise hands before entering transportation.
- Bags will be sanitised.

